

TAPON HEMBRA CPVC SCH-80 ERA

Información del producto

| | |
|-----------|---|
| MARCA | ERA |
| LÍNEA | LÍNEA CPVC Y CPVC SCH-80 |
| CATEGORÍA | Conexiones |
| MEDIDAS | 1/2", 3/4", 1", 1 1/2", 2", 2 1/2", 3", 4" |

Vista del producto

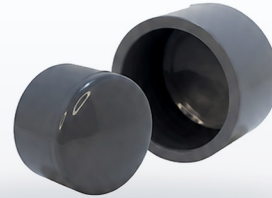


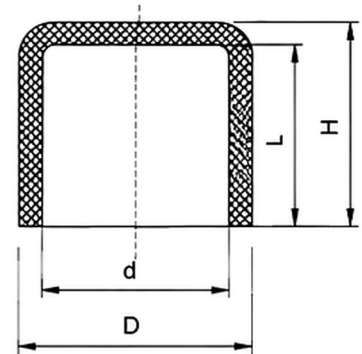
TABLA DE DIMENSIONES

JX Series



TABLA DE DIMENSIONES

| Nom Size | D | d | L | H |
|----------|------|-------|------|------|
| 1/2" | 29.3 | 21.34 | 22.7 | 39.7 |
| 3/4" | 35.1 | 26.67 | 25.9 | 33.7 |
| 1" | 43.1 | 33.4 | 29.1 | 33.8 |
| 1 1/4" | 52.4 | 42.16 | 32.3 | 43 |
| 1 1/2" | 59 | 48.26 | 35.4 | 45.8 |
| 2" | 72 | 60.33 | 38.6 | 51.8 |
| 3" | 33.3 | 25 | 19.5 | 25 |
| 4" | 41 | 32 | 22.5 | 30 |
| 6" | 33.3 | 25 | 19.5 | 25 |



Dirección
Cal. Ascope Nro. 442, Lima Industrial
C.C. LA BELLOTA - Lima



Teléfonos
998 377 758 / 977 639 802
977 630 970



Correo
ventas@yadiranicol.com



Web
www.yadiranicol.com

ERA

